

Struxure Connector for IBM Maximo

Ensure Consistent Attributed MRO Item Descriptions



The Source

for Critical Information and Insight™

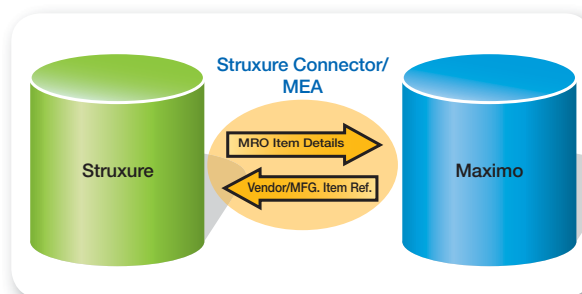
Clean consistent data is required to fully unlock the value of IBM's Maximo® Asset Management software. For over 10 years, IHS Intermat has specialized in providing structured attributed parts and materials content for Maximo Asset Catalog and Classification. Only IHS Intermat has the complete solution for MRO catalog authoring and management, seamlessly integrated with IBM Maximo Version 5.1, 6.x and 7.x.

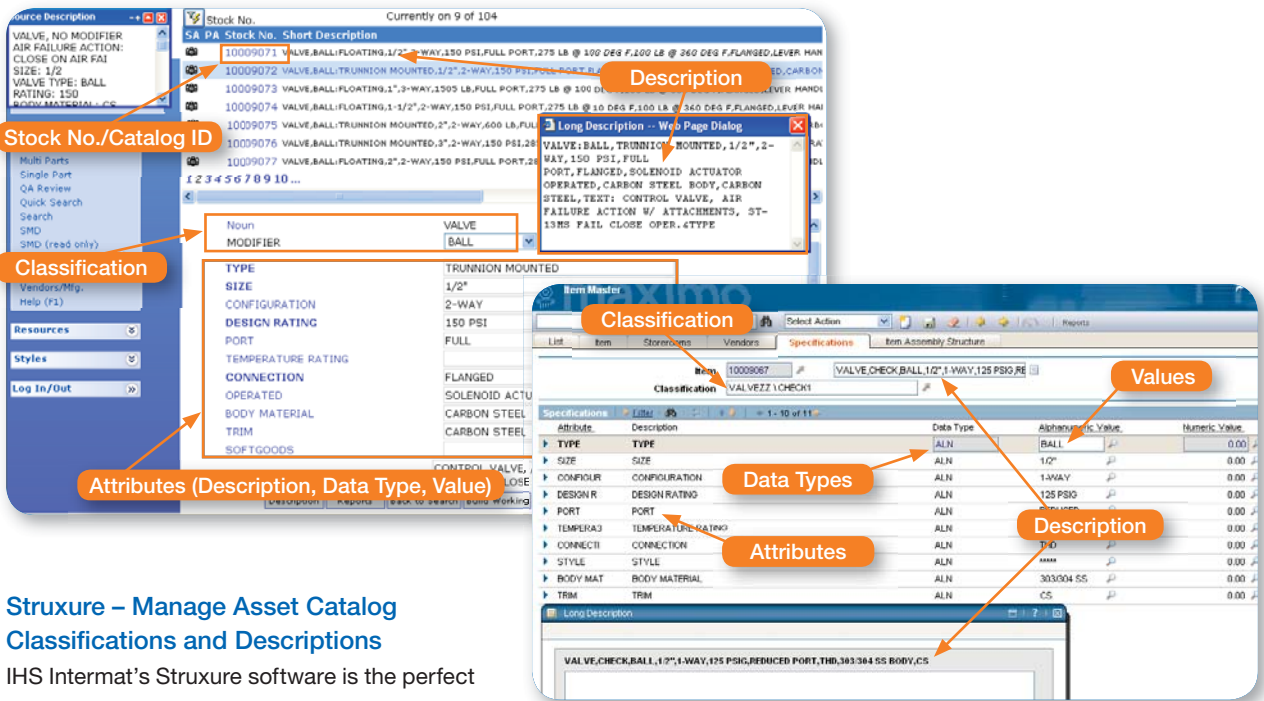
- **Standard Modifier Dictionary™ (SMD™)** – the preeminent classification standard for MRO materials, used within Maximo Asset Management at hundreds of plants worldwide. SMD formats are designed to map to Maximo Specification Tables in the Item Master. These Specification Tables are otherwise empty with Maximo delivery, meaning significant effort on part of the Implementation Team to create meaningful data for these tables.

- **Struxure®** – advanced catalog authoring and management functionality to develop and maintain accurate and consistent descriptions. Struxure is designed to enhance and complement the capabilities of IBM Maximo, and to ensure that all new and updated item descriptions and attributes conform to the SMD and Maximo Specification Tables.

- **Struxure Connector for IBM Maximo** – seamlessly automates and synchronizes the data flow between Struxure and Maximo. It ensures that users need only update information in one system, and utilize the same information in both systems. The Struxure Connector manages the integration and has been designed and configured to leverage the Maximo Enterprise Adapter (MEA). MEA transforms the transactions to XML format or vice-versa, upon which data can be transported. The Struxure Connector is specifically built to utilize Integration Tables.

Struxure is the system of record for building and maintaining the MRO item descriptions through systematic enforcement of catalog data standards, while Maximo is the system of record for the Vendor and Manufacturer information. The Struxure Connector with MEA manages the data flow between Struxure and Maximo.





Struxure – Manage Asset Catalog Classifications and Descriptions

IHS Intermat’s Struxure software is the perfect complement to IBM Maximo, enabling customers to prevent duplicates as well as sustain standardized and consistent item descriptions across the enterprise. More specifically, Struxure is used to build and maintain the asset class and class structure as well as the MRO item information such as short and long descriptions, attributes and values. Maximo maintains the item references (i.e. Inv/Vendor Tables) as well as the Vendor and Manufacturing Company information.

Struxure Connector – Manage Data Flow between Struxure and Maximo

The Struxure Connector is designed to transfer and update information from and between Struxure and Maximo. The primary fields of information to be transferred from Struxure to Maximo include the fields shown on the screen shots above.

The Struxure Connector also manages the transfer and updating of information from Maximo to Struxure. The primary fields of information to be transferred from Maximo to Struxure are the Vendor/Manufacturer Data.

The Struxure Connector ensures that classifications, descriptions and attributes in Maximo are always consistent, accurate, comparable, and complete.

Struxure Connector – Customized for your Requirements and Configuration

While the Struxure Connector for IBM Maximo includes robust capabilities ‘out of the box,’ we find that each company has unique requirements and differing implementation and configurations. Therefore, we can configure the Struxure Connector to meet your specific requirements.

Find Out More

Find out how IHS Intermat’s Struxure Connector for IBM Maximo can provide search/query improvements, duplicate identification and cost avoidances with IBM Maximo Asset Management. Contact IHS Intermat today for a complimentary MRO data analysis and consultation.



For more information on IHS Intermat Solutions:
 Worldwide +1 281 304 0897
 Web: www.intermat.com
 Email: intermat@ihs.com

For more information on IHS Inc.:
 Worldwide +1 303 397 2896
 USA/Canada 800 716 3447
 Web: www.ihs.com