

# Struxure Connectors for SAP

Ensure Consistent Attributed MRO Item Descriptions



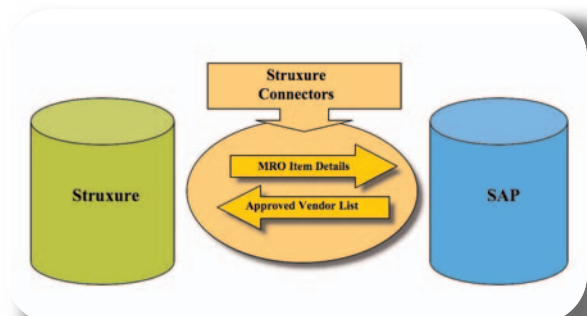
**The Source**  
for Critical Information and Insight™

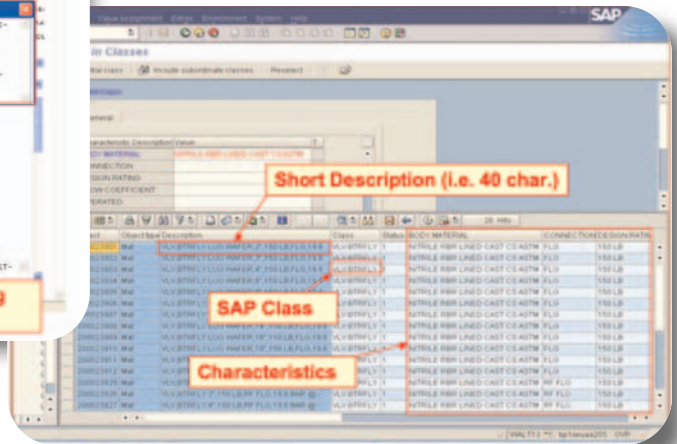
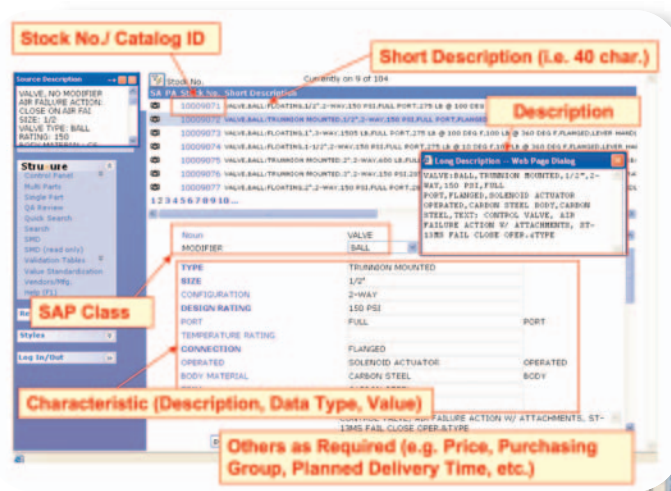
**Clean consistent data is required to fully unlock the value of SAP® solutions for Enterprise Asset Management. For more than 10 years, IHS Intermat has specialized in providing structured attributed parts and materials content for SAP, including Material Master data for SAP Materials Management (MM) module. Only IHS Intermat has the complete solution for MRO catalog authoring and management, seamlessly integrated with SAP.**

- **Standard Modifier Dictionary™ (SMD™)** - the preeminent classification standard for MRO materials, used with SAP at hundreds of plants worldwide. SMD formats seamlessly map to SAP Materials Master data fields such as Class, Classification, Characteristics, and Short/Long Descriptions. Many of these fields are otherwise empty with SAP delivery, meaning significant effort on part of the SAP Implementation Team to create meaningful data for these tables.
- **Struxure®** - advanced catalog authoring and management functionality to develop and maintain accurate and consistent descriptions. Struxure is designed to enhance and complement the capabilities of SAP MM, and to ensure that all new and updated item descriptions and characteristics conform to the SMD as well as SAP tables.
- **Struxure Connectors for SAP** - seamlessly automates and synchronizes the data flow between Struxure and SAP. It ensures that users need only update information in one system, and utilize the same

information in both systems. The Struxure Connectors for SAP enable updates, additions and deletions of class (SMD noun/modifier), characteristics, MRO items, associated manufacturer/ vendor part information, and additional fields needed to create a Material Master in SAP MM. Data is captured and replicated between Struxure and SAP databases on a periodic (configurable) basis via Windows services on the Struxure application server.

At a high level, Struxure is the system of record for building and maintaining the MRO item descriptions through systematic enforcement of catalog data standards, while SAP is the system of record for the Vendor/Manufacturer information.





### Struxure – Create and Update Material Master Data (Class, Characteristics, etc.)

IHS Intermat's Struxure software is the perfect complement to SAP, enabling customers to prevent duplicates as well as sustain standardized and consistent item descriptions across the enterprise. More specifically, Struxure is used to build and maintain the SAP class/classification structure as well as the MRO item information such as short and long descriptions, characteristics and values. SAP maintains the item references as well as the Vendor and Manufacturer Company information.

### Struxure Connectors – Manage Data Flow between Struxure and SAP

The Struxure Connectors are designed to transfer and update information from Struxure to SAP. The primary fields of information to be transferred from Struxure to SAP include the fields shown on the screen shots above.

The Struxure Connectors also manage the transfer and updating of information from SAP to Struxure. The primary fields of information to be transferred from Struxure to SAP are those associated with the Approved Vendor List.

The Struxure Connectors for SAP ensure that descriptions and characteristics in SAP MM are always consistent, accurate, comparable, and complete.

### Struxure Connector – Customized for your Requirements and Configuration

While the Struxure Connectors for SAP include robust capabilities 'out of the box,' we find that each company has unique requirements and differing implementation and configurations. Therefore, we can configure the Struxure Connectors meet your specific requirements.

### Find Out More

Find out how IHS Intermat's Struxure Connectors for SAP can provide search/query improvements, duplicate identification and cost avoidances with SAP ERP and EAM implementations. Contact IHS Intermat today for a complimentary MRO data analysis and consultation.



For more information on IHS Intermat Solutions:  
 Worldwide +1-713-623-4567  
 U.S.: 1-800-756-5333  
 Web: <http://parts.ihs.com>  
 Email: [sales@intermat.com](mailto:sales@intermat.com)

For more information on IHS Inc.:  
 Worldwide +1-303-397-2896  
 U.S. 800-716-3447  
 Web: [www.ihs.com](http://www.ihs.com)