

Struxure®

IHS Intermat Solutions' Catalog Authoring and Management Tool



The Source
for Critical Information and Insight™

IHS Intermat Solutions offers Struxure, an innovative Web-based software application for managing maintenance, repair and operations (MRO) catalogs. Struxure provides the parts management functionality needed to develop and maintain accurate and consistent parts descriptions. These descriptions in turn become the basis for creating part records in a customer's enterprise resource planning (ERP) or enterprise asset management (EAM) materials master.

Tangible & Sustainable Benefits

Struxure enables our customers to realize significant savings through:

- Identification of duplicate inventory
- Avoidance of false stock-outs
- Simplification of inventory searches
- Reduction in equipment downtime
- Realization of maximum benefits from their ERP/EAM systems.

Advanced Cataloging Features

Struxure supports a distributed workforce by facilitating mass deployment of, and access to, MRO catalogs. Struxure 5 is a Microsoft®.NET, Web-based software application providing a "zero footprint" installation throughout an organization.

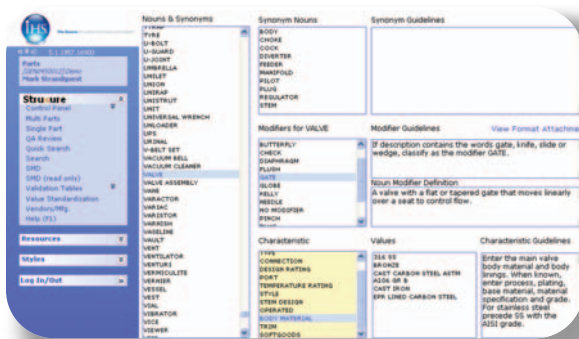
Struxure is built to take maximum advantage of the Standard Modifier Dictionary (SMD™), the world's most comprehensive and widely used standard for the description of MRO data.

Struxure's powerful cataloging features include item creation and maintenance tools, list-making capabilities, standard and custom reporting features, network capabilities and global description standardization.

In addition, Struxure incorporates the ability to store and display attachments such as part images, graphics, documents and Web links.

Struxure includes state-of-the-art search functionality, which enables its users to browse and locate spare parts by item description or by a series of references such as vendor, plant, commodity code, UN/SPSC code, eClass codes and status.

Additionally, Struxure facilitates database management by allowing users to update and expand line-item parameters globally while maintaining the consistency and integrity of their catalog database. For example, if in one record the characteristic value "stainless steel" is changed to "SS", that modification can be changed throughout the database within the appropriate context.



Struxure is built to take maximum advantage of the SMD, the world's most widely used standard for the description of MRO parts and supplies.



Filter and Sort Description searches allow Struxure 5 users to browse and locate parts by item description or by a series of references, such as vendor, plant, commodity code and status.



Value Standardization is one of Struxure 5's most powerful tools, allowing users to modify characteristic values while maintaining the consistency and integrity of their catalog database.

System Integration and Compatibility

IHS Interat Solutions provides certified integrations with many of the leading EAM/ERP systems, such as SAP's Materials Management (MM) module and IBM's Maximo®. This integration enables users of these systems to take advantage of Struxure 5's advanced cataloging capabilities, many of which are not found in the standard EAM/ERP suite.

Struxure is compatible with most other EAM/ERP systems, including Mincom®, Indus Passport™, Oracle (PeopleSoft®/JDE), and Datastream.

Struxure 5 System Requirements

Database Server

- SQL Server 2000 or higher
- Oracle v 8.1.7 or higher

Production Server

- Windows 2000 Server or Windows 2003 Server
- MS Data Access Components (MDAC) v 2.7 or higher
- MS IIS 6.0
- Microsoft.Net Framework v 1.1
- 2 GHz Pentium 4 Processor
- 1 GB (2 GB recommended) of RAM
- 20 GB of available disk space

Client Desktop

- Windows 2000 or Windows XP Professional
- 300 MHz (600 MHz recommended) Processor
- 128 MB (256 MB recommended) of RAM
- 5-20 MB of available disk space
- 1024 x 768 screen resolution with True Color capability

Network

- Minimum 100 Mbps connectivity between IIS and Database Server
- Minimum 1 Mbps connectivity between Client (user) and Application (IIS) server (DSL or Cable modem equivalent)



For more information on IHS Interat Solutions:
 Worldwide +1-713-623-4567
 U.S.: 1-800-756-5333
 Web: <http://parts.ihs.com>
 Email: sales@intermat.com

For more information on IHS Inc.:
 Worldwide +1-303-397-2896
 U.S.: 800-716-3447
 Web: www.ihs.com